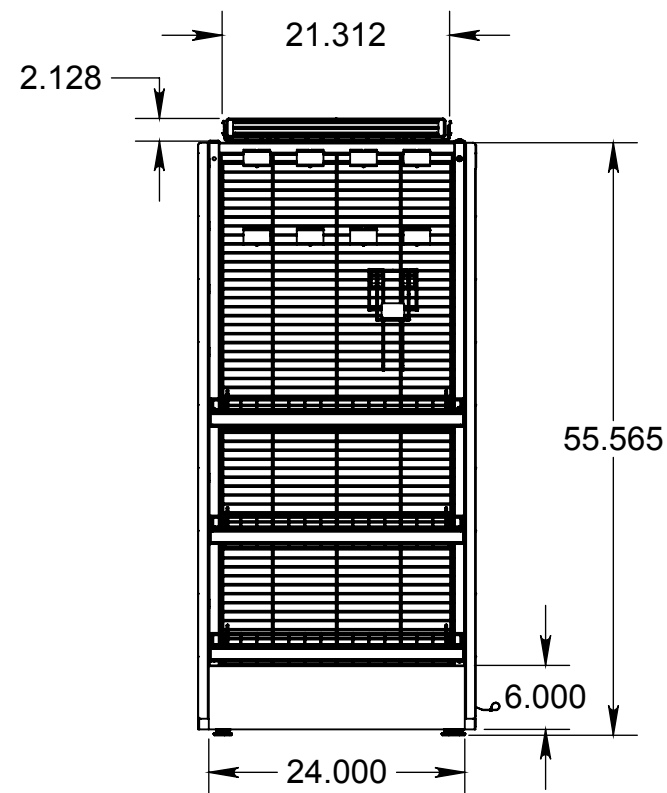
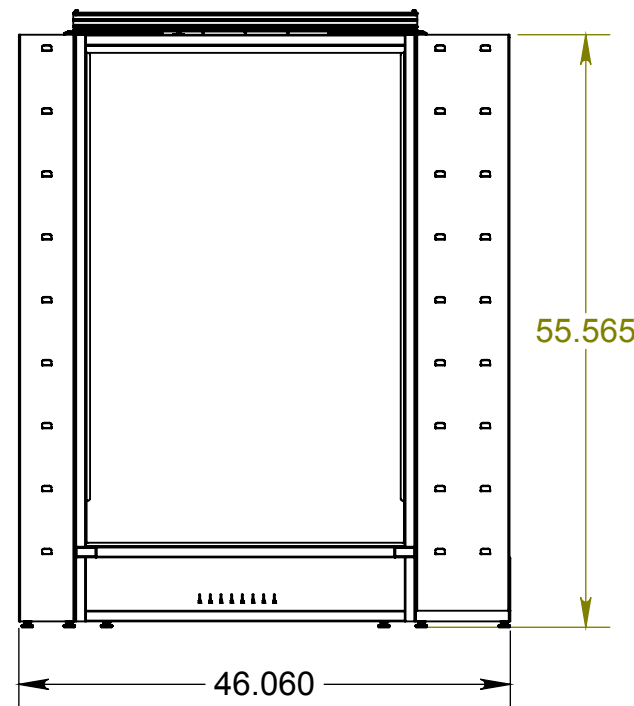
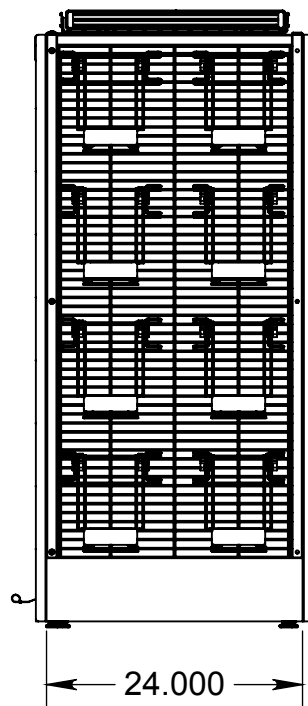


DETAIL B
SCALE 1 : 4

3.997
I.D.
MAGAZINE
POCKET SIDE

32.250
TOPPER O.D.

7.859
SNACK SIDE



DETAIL A
SCALE 1 : 4

GDM 30 COOLER
CUSTOMER PROVIDED

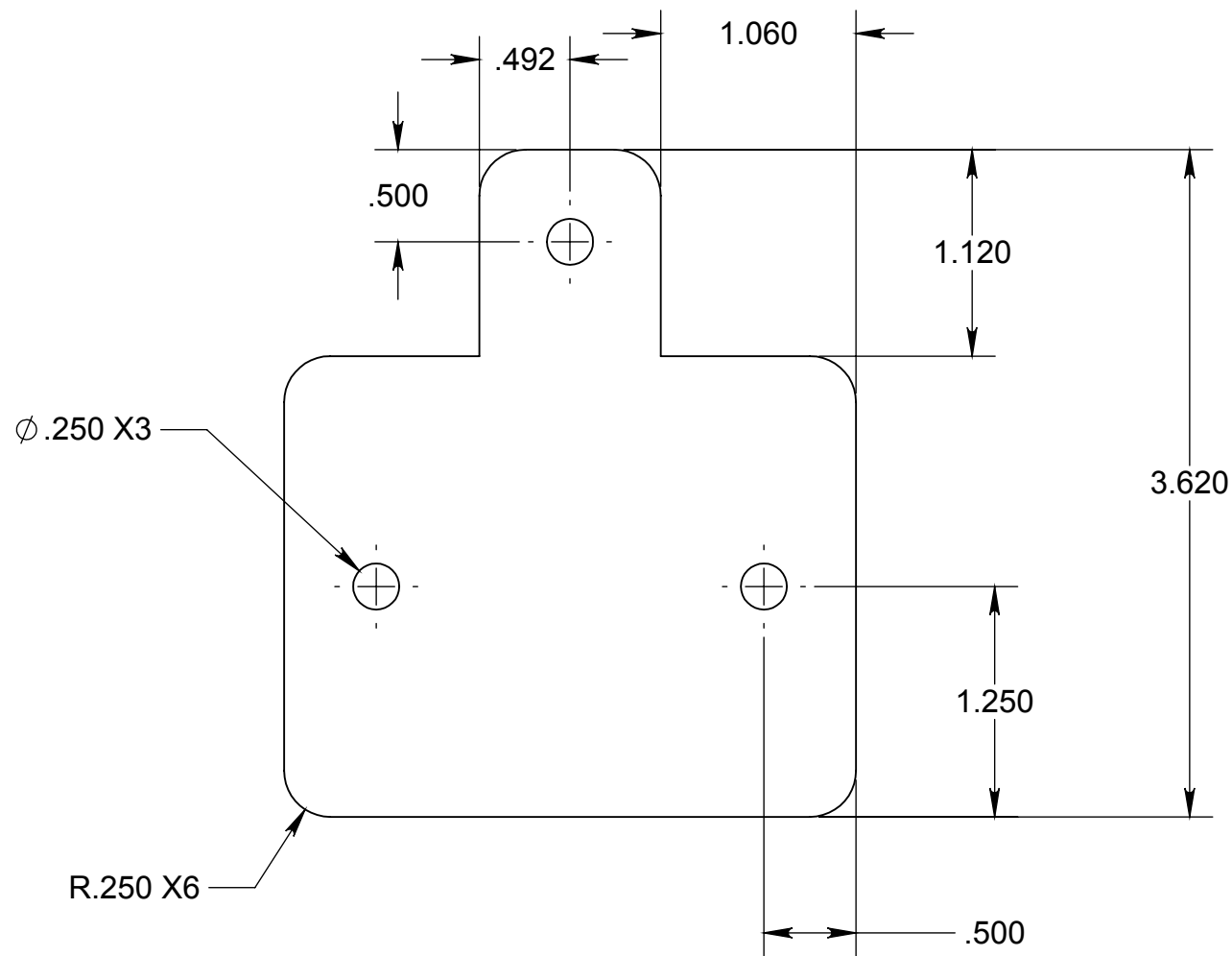
ITEM #	REV	PART NUMBER	DESCRIPTION	MATERIAL	QTY.
1		109426B-1	BACK PANEL FRAME	---	1
2		109426C-1	TOPPER BASKET ASSEMBLY	---	1
3		109426CL-01P-1	SCO WALL ATTACHMENT	14 GA. (.075) C.R.S.	1
4		109426E	-B SINGLE POCKET	---	4
5		109426F	-OSB SINGLE POCKET	---	4
6	A	109426G-1	24" FLAT SHELF	---	3
7	A	109426H-1	SNACK SIDE FRAME	---	1
8	A	109426J-1	MAGAZINE SIDE FRAME	---	1
9		109651EDB-1	SLIM JIM HOLDER	---	1
10		30308	SCREW,PPH,.25-20X1.5 ZINC	---	6
11		30454	SCREW,HH,TEK,10X.625	Stainless Steel	2
12		30571	SCREW,PPH,.25-20X.75	ZINC	6
13		35606	HOOK,FLIP SCAN,6X.148,FSFL6C ZINC	TRION # FFSM6C4	8
14		35846	TIE, CABLE, 4, NATURAL	---	8
15		45050	LABEL HOLDER,1 1/4" X 2" FLIP SCAN	TRION: FSLH#30-0051CL	8

WEIGHT (lbs): 110.77 SURFACE AREA (in²): 21868.71 VOLUME (in³): 1012.62 Print Date: 2/7/2018

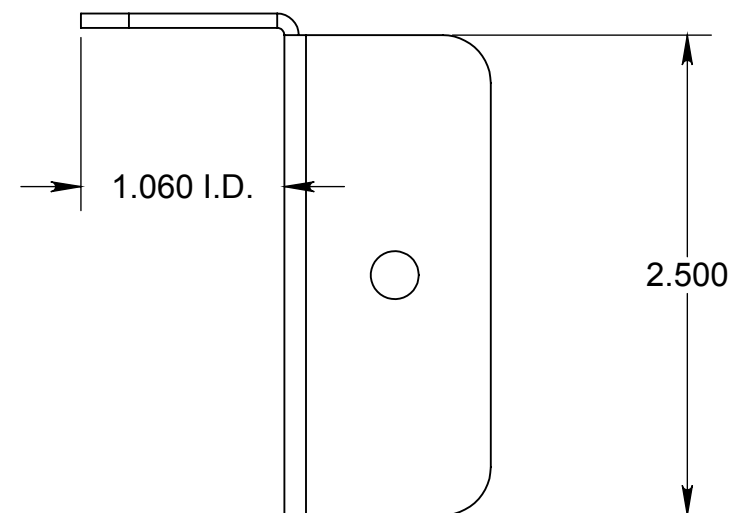
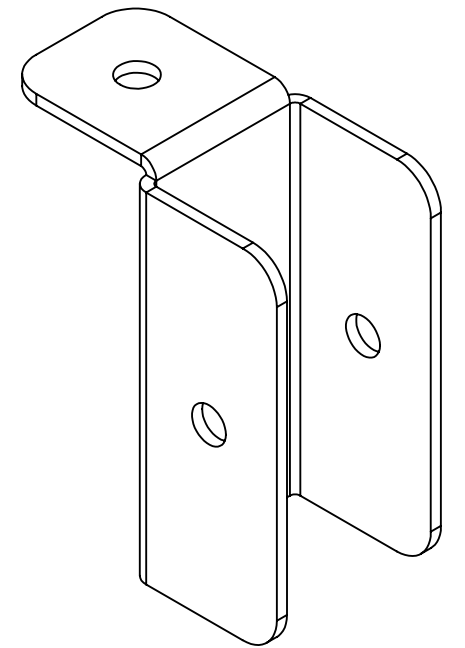
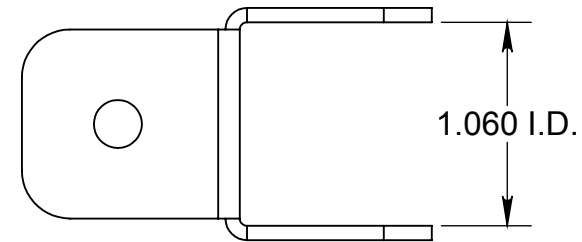
REV.	RFC/ECN	REVISION DESCRIPTION	BY	DATE	DRAWN BY: RG	DATE: 10/27/2016	THE INFORMATION CONTAINED IN THIS DRAWING IS THE SOLE PROPERTY OF DISPLAY SOURCE ALLIANCE LLC. ANY REPRODUCTION IN PART OR WHOLE WITHOUT THE WRITTEN PERMISSION OF DISPLAY SOURCE ALLIANCE LLC IS PROHIBITED.
					3rd ANGLE PROJECTION		MATERIAL: ---
					TOLERANCE: (Unless otherwise spec.) Decimals ± .030" Angular ± 2° Holes ± .002"	TUBING: (Unless otherwise spec.) All holes drilled or mandrel punched	PROJECT: Kroger - Toshiba SCO
							DESCRIPTION: COOLER TOPPER w/SIDES

**Last Saved By: James Motley





FLAT PATTERN



**Last Saved By: John Matejczik

REV.	RFC/ECN	REVISION DESCRIPTION	BY	DATE	DRAWN BY: JWM	DATE: 12/27/2016	THE INFORMATION CONTAINED IN THIS DRAWING IS THE SOLE PROPERTY OF DISPLAY SOURCE ALLIANCE LLC. ANY REPRODUCTION IN PART OR WHOLE WITHOUT THE WRITTEN PERMISSION OF DISPLAY SOURCE ALLIANCE LLC IS PROHIBITED.
					3rd ANGLE PROJECTION		
					TOLERANCE: (Unless otherwise spec.) Decimals $\pm .030$ " Angular $\pm 2^\circ$ Holes $\pm .002$ "	TUBING: (Unless otherwise spec.) All holes drilled or mandrel punched	MATERIAL: 14 GA. (.075) C.R.S.
							PROJECT: Kroger - Toshiba SCO
							DESCRIPTION: SCO WALL ATTACHMENT

WEIGHT (lbs): 0.18

SURFACE AREA (in²): 18.65

VOLUME (in³): 0.65

Print Date: 2/7/2018



PART NO.: 109426CL-01P-1

Rev:

SHEET:

2 of 2